

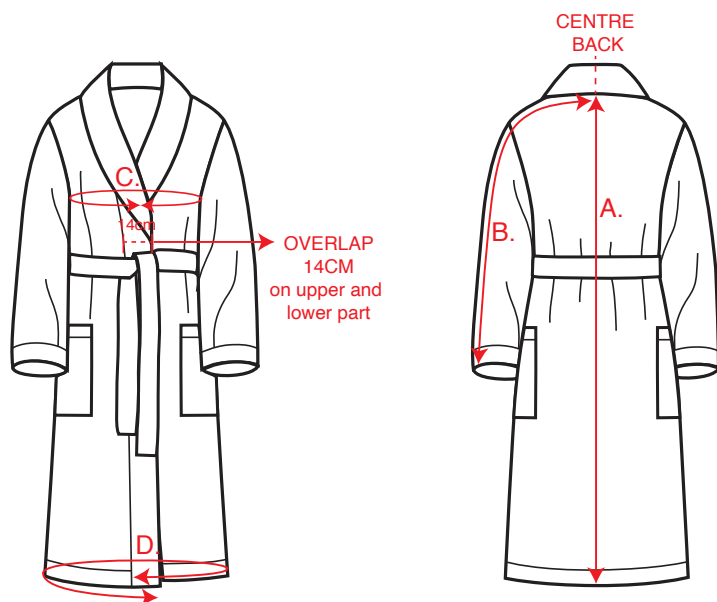
How to measure the garment, same for all styles:

A. Length is measured from centre back below collar to bottom on garment.

B. Sleeve length is measured from centre back below collar to sleeve end on garment.

C. Chest width is measured around chest when it is closed with 14cm overlap on garment.

D. Bottom width is measured from edge to edge on garment.



TOREKOV - FRÖSÖN - MÖJA - SAGATUN - SESKARÖ - VIKEN / WOMEN						
Measurement in cm		XS	S	M	L	XL
A	Length from Centre Back	114	118	120	122	124
B	Sleeve length from Centre Back	80	82	84	85	87
C	Chest width, closed with 14cm overlap	116	120	124	128	134
D	Bottom width, from edge to edge	130	132	138	142	148

Pls. note garment can shrink 3-5% after wash, this measurements are all measured before wash.

TOREKOV LONG / WOMEN						
Measurement in cm		XS	S	M	L	XL
A	Length from Centre Back	133	137	139	141	143
B	Sleeve length from Centre Back	80	82	84	85	87
C	Chest width, closed with 14cm overlap	114	118	122	128	134
D	Bottom width, from edge to edge	130	132	138	142	148

Pls. note garment can shrink 3-5% after wash, this measurements are all measured before wash.

BERGMAN / WOMEN							
Measurement in cm		S	M	S/M	L	XL	L/XL
A	Length from Centre Back	91	93	100	95	97	104
B	Sleeve length from Centre Back	80	82	82	84	85	85
C	Chest width, closed with 14cm overlap	108	112	112	116	122	122

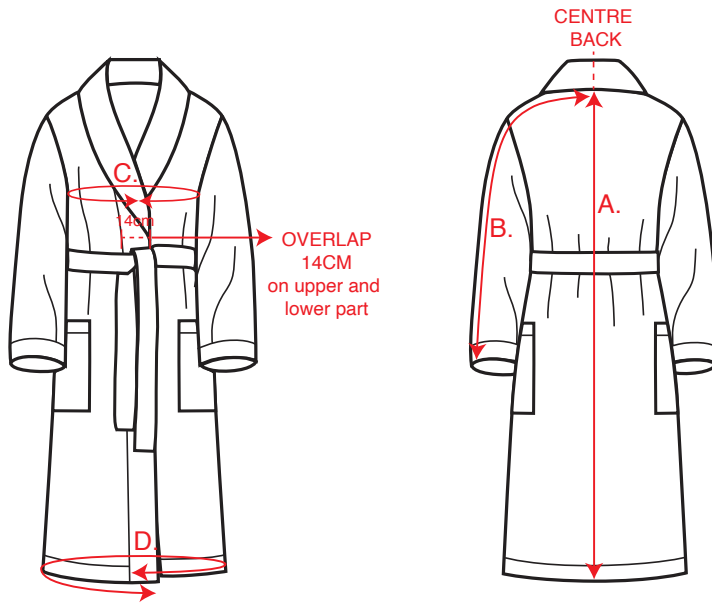
Pls. note garment can shrink 3-5% after wash, this measurements are all measured before wash.

MÖLLE / UNISEX						
Measurement in cm		S	M	L	XL	XXL
A	Length from Centre Back	123	126	128	131	134
B	Sleeve length from Centre Back	86	88	90	92	94
C	Chest width, closed with 14cm overlap	122	124	128	134	140
D	Bottom width, from edge to edge	142	144	149	156	161

Pls. note garment can shrink 3-5% after wash, this measurements are all measured before wash.

How to measure the garment, same for all styles:

- A. Length is measured from centre back below collar to bottom on garment.
- B. Sleeve length is measured from centre back below collar to sleeve end on garment.
- C. Chest width is measured around chest when it is closed with 14cm overlap on garment.
- D. Bottom width is measured from edge to edge on garment.



TOREKOV - GLÖSA - KOSTER - SESKARÖ - TROUVILLE - VITEMÖLLA / MEN		S	M	L	XL	XXL	XXXL
Measurement in cm							
A	Length from Centre Back	122	124	126	128	130	132
B	Sleeve length from Centre Back	88	90	92	94	97	100
C	Chest width, closed with 14cm overlap	124	128	134	140	146	152
D	Bottom width, from edge to edge	144	149	156	161	167	173

Pls. note garment can shrink 3-5% after wash, this measurements are all measured before wash.

TOREKOV LONG / MEN		S	M	L	XL	XXL	XXXL
Measurement in cm							
A	Length from Centre Back	141	143	145	147	149	151
B	Sleeve length from Centre Back	88	90	92	94	97	100
C	Chest width, closed with 14cm overlap	124	128	134	140	146	152
D	Bottom width, from edge to edge	144	149	156	161	167	173

Pls. note garment can shrink 3-5% after wash, this measurements are all measured before wash.

WINSTON / MEN		S	M	L	XL	XXL	XXXL
Measurement in cm							
A	Length from Centre Back	123	126	128	131	134	137
B	Sleeve length from Centre Back	86	88	90	92	94	96
C	Chest width, closed with 14cm overlap	122	124	128	134	140	146
D	Bottom width, from edge to edge	142	144	149	156	161	166

Pls. note garment can shrink 3-5% after wash, this measurements are all measured before wash.

BERGMAN / MEN		S	M	S/M	L	XL	L/XL	XXL
Measurement in cm								
A	Length from Centre Back	105	107	107	109	111	111	118
B	Sleeve length from Centre Back	85	87	87	89	92	92	94
C	Chest width, closed with 14cm overlap	116	120	120	126	132	132	138

Pls. note garment can shrink 3-5% after wash, this measurements are all measured before wash.